



# CoastLines

The League of Women Voters ® of Curry County

Volume 32, Issue 2

[www.lwvcurry.org](http://www.lwvcurry.org)

October 2015

**Time, Dates and  
Places -  
2015-2016  
Calendar  
On Page 5**

*Unit Meetings, Board  
Meetings, Forums  
and More!*

**Please support  
our sponsors -**

**Coupon Books  
Fall Sale:  
\$10.00  
Contact a Board  
Member**

## INSIDE THIS ISSUE:

|                                |   |
|--------------------------------|---|
| President's<br>Notes           | 2 |
| LWVOR<br>Studies               | 3 |
| September<br>Unit Reports      | 3 |
| National Voter<br>Registration | 4 |
| Member Bio<br>Carol Penn       | 4 |
| Board<br>Report                | 4 |
| Welcome New<br>Members         | 4 |

## Measure Forums - October 13, 20, 22

2 ballot measures regarding the Curry Health District are on the ballot asking residents inside (Measure 8-83) and outside (Measure 8-84) the District whether south county should be annexed to the district. The LWVCC will be holding 3 educational forums

regarding the ballot measures. Since no formal PAC has filed opposing the measure and Curry Health Network CEO Virginia Razo *cannot* advocate or oppose the measures she has agreed to speak at LWVCC Public Forums in all three cities presenting only the facts.

There will be time allotted for questions to clarify what the ballot measure entails. Questions regarding taxes, services with and without the district expansion, ambulance transport and Board representation will be addressed. Be informed!

## November Consensus

### **Constitutional Amendment**

The **Constitutional Amendment (CA) Study Guide** is now available for Leagues. The Guide includes the Consensus Questions as well as Pro and Con Arguments, background materials and Points of View. In addition to the Study Guide, brief synopses of two articles by the committee on viewpoints on amending the Constitution espoused by Professors **Kathleen Sullivan** and **Adrian Vermeule** are also online. Additional information can be found on the **CA Study Page**. Our local League will discuss the *Constitutional Amendment* process at Unit meetings in November so volunteers are needed to read the material cited above and help to lead the discussion. To volunteer email: [labontelucie2@gmail.com](mailto:labontelucie2@gmail.com)

Initial materials for the **Constitutional Amendment Study** are posted and available for members at <http://forum.lwv.org/category/member-resources/our-work/constitutional-amendment-study>.

## Holiday Fashion Show Fundraiser

**October 25 - 1PM  
Event Center/  
Fairgrounds  
Showcase Building**

In order to continue to hold candidate forums and other public information events we need member and public support of our 2 fundraisers, per year. 10 fabulous models and a talented entertainer, Eddy McManus are lining up a great show. This will be a lot of fun and if you cannot attend treat a friend or two. Tickets are on sale at The Chic Boutique, The Pink Flamingo in Gold Beach and from your Board members. Businesses are contributing silent auction items. \$20 covers great hors d'oeuvres (come with your appetite), and entertainment. A wine bar is available. A big thank you to the Chic Boutique and Pink Flamingo for providing fashions.



## President's Notes by Lucie La Bonté



Dear Members and Friends;

As the fall election season approaches I hope that voters will turn out and make their voices heard during this important election. There are 3 local ballot measures, two regarding the Curry Health District Expansion (one for district members, 8-83 and one for the south county, 8-84) and one regarding a Countywide Transit/Lodging Tax Measure 8-85. The LWVCC will be holding forums regarding the Health District Expansion during our regular Unit Meeting times (see calendar Page 5). We hope members and the public will turn out to get the facts. As with every election we need to be informed to what is being proposed and how citizens will be effected if the measures pass or fail. The LWVUS has a position of Health Care.

### LWVUS Statement of Position Goal:

The League of Women Voters of the United States believes that a basic level of quality health care at an affordable cost should be available to all U.S. residents. Other U.S. health care policy goals should include the equable distribution of services, efficient and economical delivery of care, advancement of medical research and technology, a reasonable total national expenditure level for health care.

Also in October is our main fundraiser for the year The Holiday Fashion Show. This will include entertainment and lunch like hors d'oeuvres. Members need to come and support this event. Please buy a ticket and bring a friend.

I continue to work on my goal to increase membership. We lost a few of our older friends but have gained 4 members in the past couple of weeks. We now have 8 men as members which is a record for LWVCC. We hope you encourage your spouse to join.

Your Board has been hard at work on all our events and we hope that you make the effort to come to monthly meetings and our fun events. Turn out was low at the September Unit Meetings but the speakers were fantastic and I know I learned a lot about our water systems in the county. Members who attended were impressed with the information presented.

*Lucie*

### ***Making Democracy Work***

The League of Women Voters®, a nonpartisan political organization, encourages informed and active participation in government, works to increase understanding of major public policy issues, and influences public policy through education and advocacy.



## **The League of Women Voters of Curry County**

### **Officers & Directors 2015-2016**

Lucie La Bonté, President  
Alyssa Babin, Vice President  
Charlie Alexander, Secretary  
Marta West, Treasurer  
Lauren Spector, Director #1  
Lisa Harrison, Director #2  
Evan Kramer, Director #3

### ***CoastLines***

*A publication of the League of Women  
Voters ® of Curry County  
CoastLines is produced 10 times a year  
by the  
League of Women Voters of Curry  
County.*

Web site: [lwvcurry.org](http://lwvcurry.org)  
Friend us on Facebook!  
Election Info: [vote411.org](http://vote411.org)

## September Unit Meetings Report - Water



City Manager Terrie Richards

17 people attending the Port Orford Unit Meeting learned about the City's water supply and system. City Manager Terrie Richards and Public Works Director Duane Eckhoff explained where water sources are, how dams and piping

function and about meter replacement. Water loss because of old faulty meters is a problem. Although the city has budgeted replacing meters each year, the City would like to obtain grants to replace all the meters, change the filtration system and replace water lines. Additional water sources are being looked at and leaks are a problem. The city is asking for input from water users.

Gold Beach Unit Members had a different kind of presentation. Nesika-Ophir Water District Manager Mike Meszaros gave a slide presentation showing the water source, the Rogue River.

The District's well is encased and can withstand floods. This little district supplies water to a big area. Even though Mike believes they have a large water supply the district is looking at alternate water sources for the future. The rating system is based on use to encourage conservation.

The City of Gold Beach's Public Works Director Will Newdall discussed the city's well in the aquifer under the river. The City also finds old meters to be a problem with leakage. They also have good supply but are looking at improving their rating system to promote conservation.

### Great Schools Project

LWVOR is in a partnership to spearhead the **Great Schools, Great Communities Project** to work on the funding crisis in education in Oregon. A forum has been developed to present to small groups around the state. Look for information in future editions of *Coastlines* regarding where and when your League will host a forum.



A large crowd attended a BLM sponsored meeting on a proposed 5-year mineral withdrawal in Southwest Oregon Watersheds. An overwhelming majority were in favor of the proposal. If it went in effect this would give time for our US Senators and Congressman DeFazio to enact a 20-year ban. For more information go to: <http://kalmiopsisrivers.org>

Hard Rock Mining Study: The first meeting was held and the timeline was approved. Resource Committee Chair person is under consideration. Alyssa is emailing those spearheading different research areas. Next meeting: October 30 in Eugene. For more information regarding study or meetings contact: [lyssa.kate@gmail.com](mailto:lyssa.kate@gmail.com)

### Hard Rock Mining Updates

## VOTE! VOTE! VOTE!

### Curry County Measure 8-85

**Question:** Shall Curry County be authorized to collect a transient lodging tax throughout Curry County except in the Cities? This measure would implement Curry County No. 15-05 imposing a 6% tax on lodging guests at hotels, motels, inns, bed and breakfasts, condos, RV Parks, campgrounds, vacation rentals and other similar transient lodging facilities for stays less than 30 days.

### Curry Health District Measure 8-83 (Current Members)

### Curry Health District Measure 8-84 (South County Residents Outside District)

#### Same Question

**Question:** Shall territory be annexed into the Curry Health District with \$0.7425/\$1000 tax rate limit beginning fiscal year 2016-2017?

The annexation requires approval by a majority of voters in both the current district and in the annexed territory.

## LWVCC Member Autobiography by Carol Penn

I have been a member of the League of Women Voters since 1992, when I met the president of the Fresno, CA, League while at a phone bank for HCFA-CA; I told her I had always admired the work the League does, especially voter education. I was surprised the League was not "by invitation only," and when she suggested I join, I was delighted to do so. As I learned more about the League I was also impressed with the well-researched policy positions and long term thinking displayed by the League. Although I am a proud and passionate liberal progressive, I strongly believe the non-partisan approach to issues taken by the LWV is essential to good government and fosters bipartisan solutions to problems.

I am 65 years old and recently retired from Pelican Bay State Prison,, where I worked as a psychologist. My husband, a retired attorney/mediator, moved here with me about three years ago from Fresno, CA. We have a daughter who lives with her husband and three daughters in Fresno and an unmarried son who lives in Bakersfield. My favorite hobbies are listening to classical music, playing the flute (very much an amateur in every sense of the word), reading both history and fiction, walking on the beach and going to the gym, and travel. We plan to stay in Brookings for the foreseeable future and greatly enjoy the beauty which surrounds us.

## Welcome New Members and Old Friends by Lucie La Bonté

Our membership is growing and we have some great potential members. Membership is important and with the LWVOR Mining Study, interesting forum topics and fun events we are gaining more interest. Elections will be coming up and the LWVCC is an important part of the process. Just "asking" I have found people want to be a part of league.

I ran into Mark Curran. Director of the Curry County Animal Shelter and he was eager to help with membership of the league. "I will have a new member for you within 24 hours." Not only did his wife Linda Denesiuk join but Mark joined as well. At the Port Orford Unit Meeting all I had to do is ask Nella Abbot to rejoin and she wrote a check. Nella was one of our first Port Orford members. Welcome back! Then at the Gold Beach Unit Meeting Charlene Enoch made a pitch and signed up new resident Anne Morgan! In Brookings we welcome Dennis Triglia and former member Judy Kaplan. Phil Dickson and Elizabeth Lortscher both from Gold Beach joined at the Annual Meeting. We are excited to have you as members. Welcome!

## National Voter Registration Day



LWVCC members took part in National Voter Registration Day on September 22nd. 8 new voters were registered, voters changed their addresses and I changed parties. 22 registration forms were taken home! Thank you Lauren Spector, Lisa Harrison, Charlene Enoch and Charlie Alexander for organizing this event and Sherrylee Felger for reporting. (Pictured to the left are members Marjorie Bromser and Penny Sues at the table in Port Orford)

## Spring Candidate Forums

by Charlie Alexander

We are in the process of scheduling Forums for the week of April 17th. Several have volunteered, and we are always looking for more, to help set up and run the forums and I will be contacting you after the first of the year to get ourselves organized.



# League of Women Voters of Curry County

## Calendar 2015-2016

|                 |                                 |   |   |   |
|-----------------|---------------------------------|---|---|---|
| <b>October</b>  | 2<br>13<br>20<br>22<br>25<br>31 | Board Meeting<br>Unit Meeting - Curry General<br>Unit Meeting - Curry General<br>Unit Meeting - Curry General<br><b>Holiday Fashion Show</b><br>LWVOR Workshop - Eugene | Gold Beach City Hall<br>Port Orford Library<br>Pilot News Conference Room<br>Gold Beach City Hall<br>Event Center on the Beach      | 10 AM<br>1:00 PM<br>5:30 PM<br>5:30 PM<br>1:00 PM                       |
| <b>November</b> | 3<br>6<br>9<br>17<br>19         | Election Day - Ballot Measures<br>Board Meeting<br>Unit Meeting -LWVUS Consensus<br>Unit Meeting- LWVUS Consensus<br>Unit Meeting -LWVUS Consensus                      | <b>VOTE!!! Polls Close 8PM</b><br>Gold Beach City Hall<br>Port Orford Library<br>Pilot News Conference Room<br>Gold Beach City Hall | VOTE!!!<br>10 AM<br>1:00 PM<br>5:30 PM<br>5:30 PM                       |
| <b>December</b> | 4<br>13                         | No Unit Meetings<br>Board Meeting<br><b>Holiday Party</b> - Special Guest<br>LWVOR President Norman Turrill   | TBA<br>Mangia Buff's Gold Beach<br>Reservations Needed  | 10 AM<br>1:00 PM  |
| <b>January</b>  | 8<br>12<br>19<br>28             | Board Meeting<br>Unit Meeting -LWVUS Consensus<br>Unit Meeting -LWVUS Consensus<br>Unit Meeting- LWVUS Consensus  | Gold Beach City Hall<br>Port Orford Library<br>Pilot News Conference Room<br>Gold Beach City Hall                                   | 10 AM<br>1:00 PM<br>5:30 PM<br>5:30PM                                   |
| <b>February</b> | 5<br>9<br>16<br>22<br>25        | Board Meeting<br>Unit Meeting Economic Campaign<br>Unit Meeting Economic Campaign<br>Day at the Legislature<br>Unit Meeting Economic Campaign                           | Gold Beach City Hall<br>Port Orford Library<br>Pilot News Conference Room<br>Salem<br>Gold Beach City Hall                          | 1:00 PM<br>5:30 PM<br><br>5:30 PM                                       |
| <b>March</b>    | 4<br>8<br>15<br>24              | Board Meeting<br>Unit Meeting- TBA<br>Unit Meeting- TBA<br>Unit Meeting- TBA  | Gold Beach City Hall<br>Port Orford Library<br>Pilot News Conference Room<br>Gold Beach City Hall                                   | 10 AM<br>1:00 PM<br>5:30 PM<br>5:30 PM                                  |
| <b>April</b>    | 1<br>12<br>19<br>28             | Board Meeting<br>Unit Meeting-LWVOR Consensus<br>Unit Meeting-LWVOR Consensus<br>Unit Meeting-LWVOR Consensus<br>Candidate Forum<br>Candidate Forum<br>Candidate Forum  | Gold Beach City Hall<br>Port Orford Library<br>Pilot News Conference Room<br>Gold Beach City Hall<br>TBA<br>TBA<br>TBA              | 10 AM<br>1:00 PM<br>5:30 PM<br>5:30 PM<br>7:00 PM<br>7:00 PM<br>7:00 PM |
| <b>May</b>      | 21<br>21                        | LWVCC Annual Meeting<br>LWVCC Old Board/New Board   | TBA   | 10AM-12PM<br>1:00 PM  |
| <b>June</b>     | 3-5<br>16-19                    | LWVOR Council<br>LWVUS Convention   | Vancouver Hilton Hotel, WA  |   |

**VOTE!! VOTE !! VOTE!!**



## The Pink Flamingo

29304 Ellensburg Avenue Karen Roe  
Gold Beach, Oregon 541-425-0441  
*You Won't Believe What's in There!*  
karenroe485@gmail.com



## Dee-Ann's Tea Room Cafe

"Sandwiches that are built"

**Abby Mall in Brookings, Oregon**  
**(541) 469-7240**

## Coastal Copiers Sales and Leasing

Don and Vikki Nuss Owners  
800 Chetco Avenue  
P O Box 1581 Brookings, OR 97415  
Email [coastalcopiers@frontier.com](mailto:coastalcopiers@frontier.com) Phone 541-412-0244

**We're There When You Need Us!!**

PHONE (541) 412-0250  
Toll Free (800) 667-9990

FAX (541) 412-0345  
CELL (541) 251-4446

**B**  
**Barron's**  
HOME FURNISHINGS

Terry Adams  
Owner

email: [terrya@barronshomefurnishings.com](mailto:terrya@barronshomefurnishings.com)  
Website: [barronshomefurnishings.com](http://barronshomefurnishings.com)

97900 SHOPPING CENTER AVE. BOX 2494 HARBOR, OR 97415

## Historic Central Building



Museum, Shoppes,  
Real Estate Offices  
703 Chetco Avenue  
Brookings



517 Jefferson Street  
PO Box 700  
Port Orford, Oregon 97465  
TEL - 541-366-2200  
[chris@hawthornegallery.com](mailto:chris@hawthornegallery.com)  
[www.redfishportorford.com](http://www.redfishportorford.com)  
Chris Hawthorne Owner

**TANGLES**  
SALON

[www.tangles-salon.us](http://www.tangles-salon.us)

[www.tangles-salon.us](http://www.tangles-salon.us)

(541) 469-2057  
(541) 469-2057

Michael Kennedy  
800 Chetco Avenue  
Brookings, OR

You'll find it at  
**Fred Meyer**  
541-469-1610

### Store Hours

7 a.m. to 9 p.m. Winter  
7 a.m. to 10 p.m. Summer

### Pharmacy Hours

Sunday 9 a.m. to 5 p.m.  
Mon-Fri-9 a.m. to 9 p.m.

## BLUE PACIFIC Realty



16289 Hwy. 101 S. Ste. A  
Brookings, Oregon 97415  
Email: [info@blupac.com](mailto:info@blupac.com)  
Phone: 1-541-412-8424  
Toll Free: 1-888-412-8424

[www.blupac.com](http://www.blupac.com)

29793 Ellensburg Ave.  
Gold Beach, Oregon.  
(541) 373-0762  
[mchibante@charter.net](mailto:mchibante@charter.net)

## CHIC BOUTIQUE

Mandi Chibante

New, Used & Collectibles



### GOLD BEACH

Curry General Hospital  
541.247.3000

Curry Medical Practice &  
Curry Women's Clinic  
541.247.3510

Shore Pines Assisted Living  
541.247.0333

**PORT ORFORD**  
Curry Family Medical  
541.332.3861

[www.CurryHealthNetwork.com](http://www.CurryHealthNetwork.com)

### BROOKINGS

Curry Medical Center  
Primary Care / Urgent Care  
541.412.2000 / 541.412.2044

Brookings Psychiatry  
541.412.2094

Rush Surgery Center  
541.813.1835

- COMMUNITY PEOPLE
- QUALITY HEALTHCARE
- RIGHT NEAR HOME

EXPERTISE. SERVICE. INTEGRITY.  
We Get It .....

THE RIGHT CHOICE IS RIGHT HERE.

## GRANGE - SIXES GRANGE MARKETPLACE

Open 9:00am - 4:00pm Daily  
books, antiques, collectibles, rock tumblers,  
honey and more

Sixes River Road at Highway 101



## League of Women Voters of Curry County

Web site: [lwvcurry.org](http://lwvcurry.org)

Friend us on Facebook!

Election Info: [vote411.org](http://vote411.org)

**JOIN NOW! You Can Make a Difference!**  
(See Membership Form on Back!)



# Spinner's

**SEAFOOD, STEAK &  
CHOP HOUSE**  
**Non-Smoking, including  
Bar Ocean View**

**541-247-5160**  
**Dinner from 4:30 PM 7 Days a Week**  
**29430 Ellensburg Avenue Gold Beach, OR**



## BROOKINGS LAW OFFICE

Oregon & California Licensed  
**John. C. Babin**

[www.brookingslawoffice.com](http://www.brookingslawoffice.com) 541-469-5447



The City of Gold Beach  
appreciates the great  
service the  
League of Women Voters  
provides to inform Curry  
County Voters.

# Interiors

**INTERIOR DESIGN** **DISTINCTIVE COVERINGS**  
**Floors \* Windows \* Countertops \* Tile \* Home Accents**  
**541-247-6683 29325 Ellensburg Ave. Gold Beach, OR**



**Tour n' Taste!**  
**Producer of fine local  
spirits**  
**18526 Tetley Road**  
**Brookings, OR • 97415**  
**(541) 469-0194 • [www.brandypeak.com](http://www.brandypeak.com)**

## Wild Rivers Land Trust

*Securing Oregon's Legacy of Clean Waters,  
Healthy Forests & Working Lands*  
[www.wildriverslandtrust.org](http://www.wildriverslandtrust.org)  
Port Orford, Oregon 541-366-2130



- ✓ Environmental Advantages
- ✓ Improved Fuel Economy
- ✓ Extended Drain Intervals
- ✓ Autos RVs Motorcycles Boats

*The First in Synthetics®*  
**Buy online: [lindaandtombosack.myamsoil.com](http://lindaandtombosack.myamsoil.com)**

## Curry Coast Community Radio

Nonprofit community radio – of, by, and for the people!



**We welcome donations and volunteers!**  
**KCIW.ORG • [CONTACT@KCIW.ORG](mailto:CONTACT@KCIW.ORG)**  
**541-661-4098**

**Now Podcasting on iTunes  
and STITCHER RADIO**  
Look for Curry Coast Community Radio

**Mary Stansell PC Broker**



AGATE REALTY

**Century 21 Agate Realty**  
**541-425-0121 Cell**  
**800-421-8553 Toll Free**  
**541-247-6612 Office**  
**541-247-2368 FAX**  
**[www.southoregoncoast.com](http://www.southoregoncoast.com)**

## D & J Shell

**29619 Ellensburg Rd**  
**Gold Beach, Oregon 97444**  
**541-247-7440**  
**U-Haul – 8:30 AM to 2 PM**



## PREMIUM FRESH LOCAL SEAFOOD

**Retail and Wholesale  
Full Service Fish Handling**

**IN THE CANNERY BUILDING  
PORT OF GOLD BEACH, OR**  
**[www.fishermendirect.com](http://www.fishermendirect.com)**

**541-247-9494**

**TOLL FREE 1-888-523-9494**



## Curry Transfer and Recycling

**Ph 1-800-826-9801 Fax 541-469-1048**  
**P.O. Box 4008**  
**17498 Carpentryville Road**  
**Brookings, Oregon 97415**



**By appointment please call**  
**Phone: (541) 425-5161**  
**Website: [WRPilates.com](http://WRPilates.com)**  
**29286 Ellensburg Ave.**  
**Gold Beach, Oregon**

## Ultimate Coastal Properties

*Serving the Southern Oregon Coast*

**541-425-7494 855-300-5908 -Toll Free**

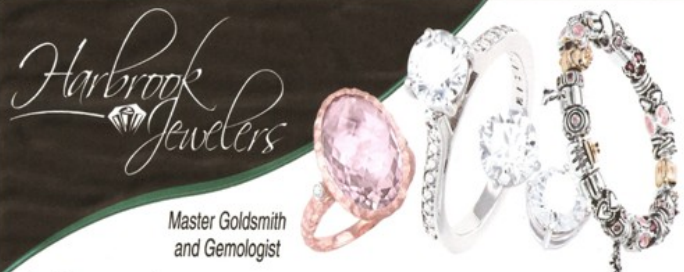
**[www.ILoveCoastalOregon.com](http://www.ILoveCoastalOregon.com)**

**[www.SearchBrookings.com](http://www.SearchBrookings.com)**

**[www.ILoveGoldBeach.com](http://www.ILoveGoldBeach.com)**



**Ultimate Coastal Properties**



## "The Experience You Deserve"

**541-469-5233**

**Brookings-Harbor Shopping Center**  
**Across from Wild River Pizza**



*Coast Lines*

League of Women Voters of  
Curry County  
P O Box 1521  
Gold Beach, OR 97415

Coupon Books Fall Sale!

**\$10.00**

Contact a Board Member or pick  
one up at your Unit Meeting.

## *The League of Women Voters of Curry County* *- - How to Join*

Yes, I want to make a difference by joining the League of Women Voters of Curry County.

\_\_\_ Individual Membership \$65 \_\_\_ Household Membership (2 adults in household) \$97.50

\_\_\_ I am unable to join but enclose a contribution of \_\_\_\_\_.

Only a portion of Membership dues to the League of Women Voters of Curry County are tax deductible.  
Donations to the League of Women Voters of Oregon Education Fund are tax deductible.

Name \_\_\_\_\_

Address \_\_\_\_\_ City, State, Zip \_\_\_\_\_

Phone \_\_\_\_\_ Email \_\_\_\_\_

I would like to work on \_\_\_\_\_



Send your check to:

League of Women Voters of Curry County  
15577 Hwy 101, no. G-5, Harbor, OR 97415

Stay informed on issues that concern you.

Join with us to make your voice heard.

Develop skills in networking, communication and leadership.

You will receive periodic League publications (local, state and national).